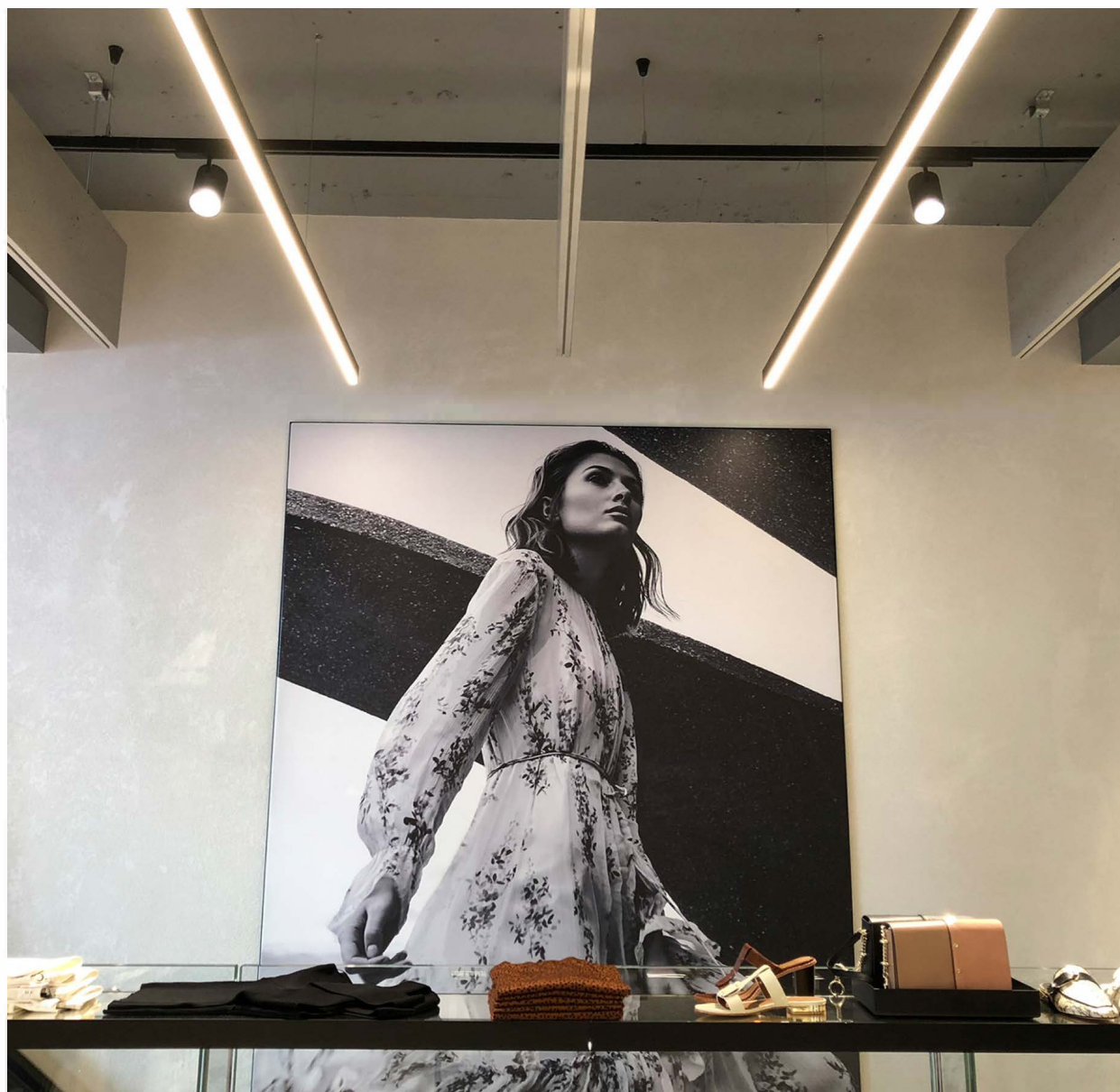




 **PROLIGHT DESIGN**  
DESIGN | MANUFACTURE | CONSULTANCY | SUPPLY

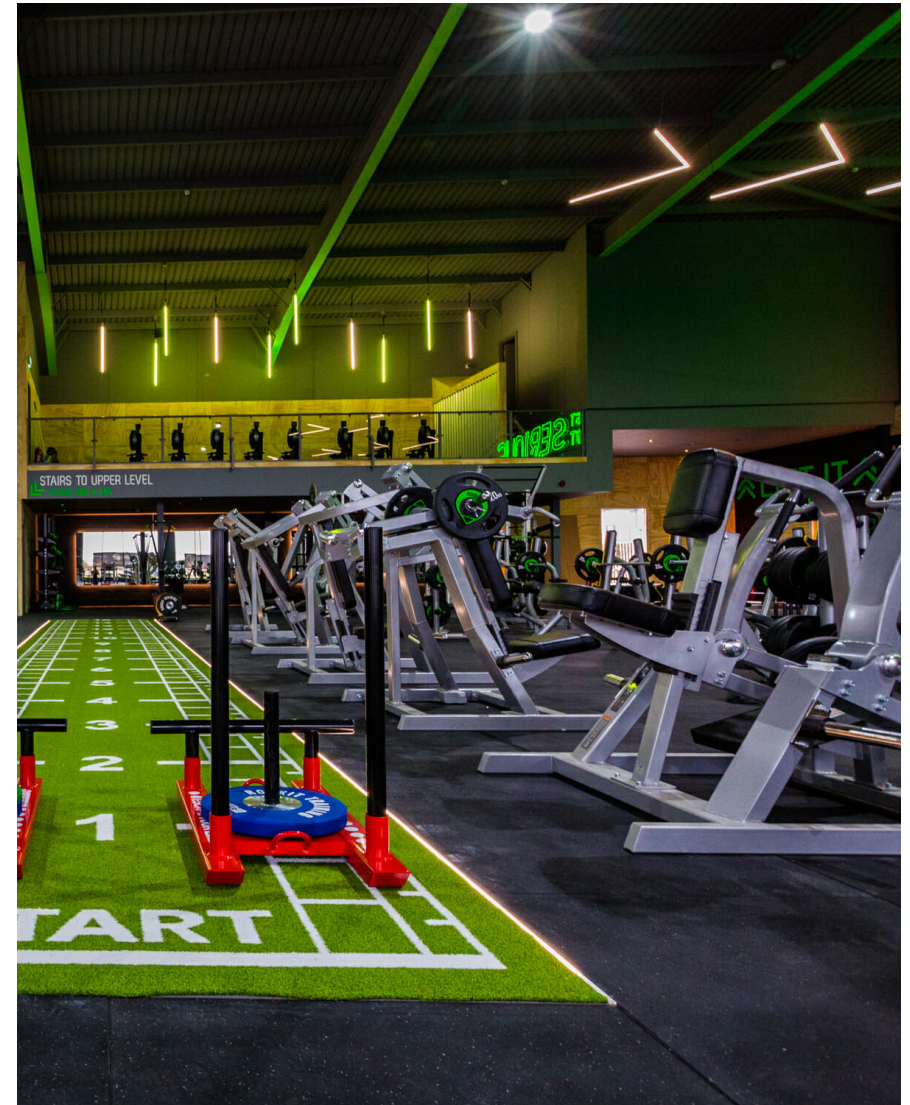
illuminate creatively







# PROLIGHT DESIGN



From conceptual design, installation and beyond, we cover every element of lighting under one roof for some of the UK's greatest retail, commercial and industrial environments. As not one size fits all, every single client is treated with a bespoke service tailored to their unique requirements. Not only that, you can rest easy knowing that should you have any queries, you will have a dedicated person as a point of contact throughout your Prolight journey.



# Lighting Design, just right



Lighting is all about creating a mood and a flow through an environment, and getting it right has a huge impact on your customers. We design lighting layouts and recommend the best products to use to get the feel just right. Our in-house design team can work with you to create spectacular bespoke luminaires either as a one-off or for a large production run, and if you'd like to see what your store is going to look like prior to installation, we develop 3D, computer-generated walk-throughs which let you explore the space.

With over 150 years worth of experience in the lighting industry, we are no stranger to successful multi-national rollouts for big high street name stores. We work with many retailers in all aspects of their lighting, whether it be bespoke pieces for their front of house, or a functional lighting schemes for the back of house. We build long-lasting relationships with big names such as River Island and Schuh, we know how to illuminate a store to complement the space, and show off their merchandise.

Unlike others, we have the infrastructure in place to store our stock on-site enabling us to have short lead times, in our 28 years of business, we have never held up a store opening with delayed lighting supply. We are experienced in all areas of retail, whether that be cosmetics, fashion, technology or even pet shops, we understand what lighting schemes work for each area of retail.



# Bespoke LED Linear Luminaires



Whether simplicity or something bespoke and unique is the desired effect, LED Linear can fulfil even the most complex of design briefs. Adding visual interest and creating a talking point, bespoke shapes such as triangles, circles or even abstract scattered suspended luminaires, there is something for every space big or small. A completely versatile product that can be suspended, surface mounted or recessed in a variety of finishes to suit bespoke requirements.

All of our linear lighting products are manufactured with integral drivers, we believe this is an element that sets our product above the rest. As there is no remote driver it means that each luminaire is individual, making assembly and maintenance a breeze.

Unsatisfied with the quality and price of other LED Linear lighting on the market, we created our own space in our workshop purely for manufacturing LED Linear luminaires. Tried and tested, we believe we produce the best LED Linear lighting solutions on the market. As we manufacture our own LED Linear products in-house, this enables us to customise every element of the final result, ensuring that our customers are supplied with a first class product. Not only that, as a member of the Lighting Industry Association we can ensure that every product we supply meets industry standards in performance, quality, safety and design.

# Our Clients



We deal with all manner of business. Our clients all share one thing in common, they like what we do. We're a friendly bunch, but our clients & work do the talking. From big brands such as River Island, Missguided and Lululemon, to local businesses, we design, manufacture and supply lighting to a wide variety of companies.

Are you next?



# Industries



Department  
Stores



Hospitality



Commercial



Industrial



Health & Beauty



Food



Automotive



Fashion

We operate within a variety of industries, whether that be supplying lighting for large warehousing units, designing bespoke lighting schemes for multi-national retail environments or a local independent store.

We can pretty much do it all!



# Service led, always



As no project is ever the same, we provide a bespoke service for each and every one of our customers. You can rest easy knowing that should you have any queries, you will have a dedicated person as a point of contact. We place the customer at the heart of everything we do and that is what sets us apart from the rest.

When you come to us for lighting you won't need to go anywhere else – design, manufacture, supply and aftercare are all dealt with under one roof. No logistical confusion, just an uncompromised consistency in our service from the word go. We have the creativity to provide original and striking solutions and the technical know-how and infrastructure to deliver on time and on spec. As a small team, we like to get to know our clients and work closely with you to provide the best possible guidance and product.

We are service led, and always go above and beyond to ensure your deadlines are met.



# Leading Products



**Casa Circle Down Light**

Small, multi-axis tilting recessed down light.



**Casa Square Down Light**

Casa Square Single is a compact and discreet gimbal down light. Available in duo and trio variations.



**Art LED Track Light**

Small compact cylinder shape that delivers on performance.



**Dingo Track Light**

Clean design and high performance track light.



**Surface LED Channel**

The Surface LED channel is a truly versatile product.



**LED Linear**

Crafted in-house, versatile and fulfils even the most ambitious design briefs.



While our extensive range of fixtures and fittings are spot on for many businesses, we are sometimes asked to work to some really demanding design briefs. For the unique, the innovative and the niche, we offer a flexible in-house manufacturing service to make sure you get your dream fittings exactly to spec.

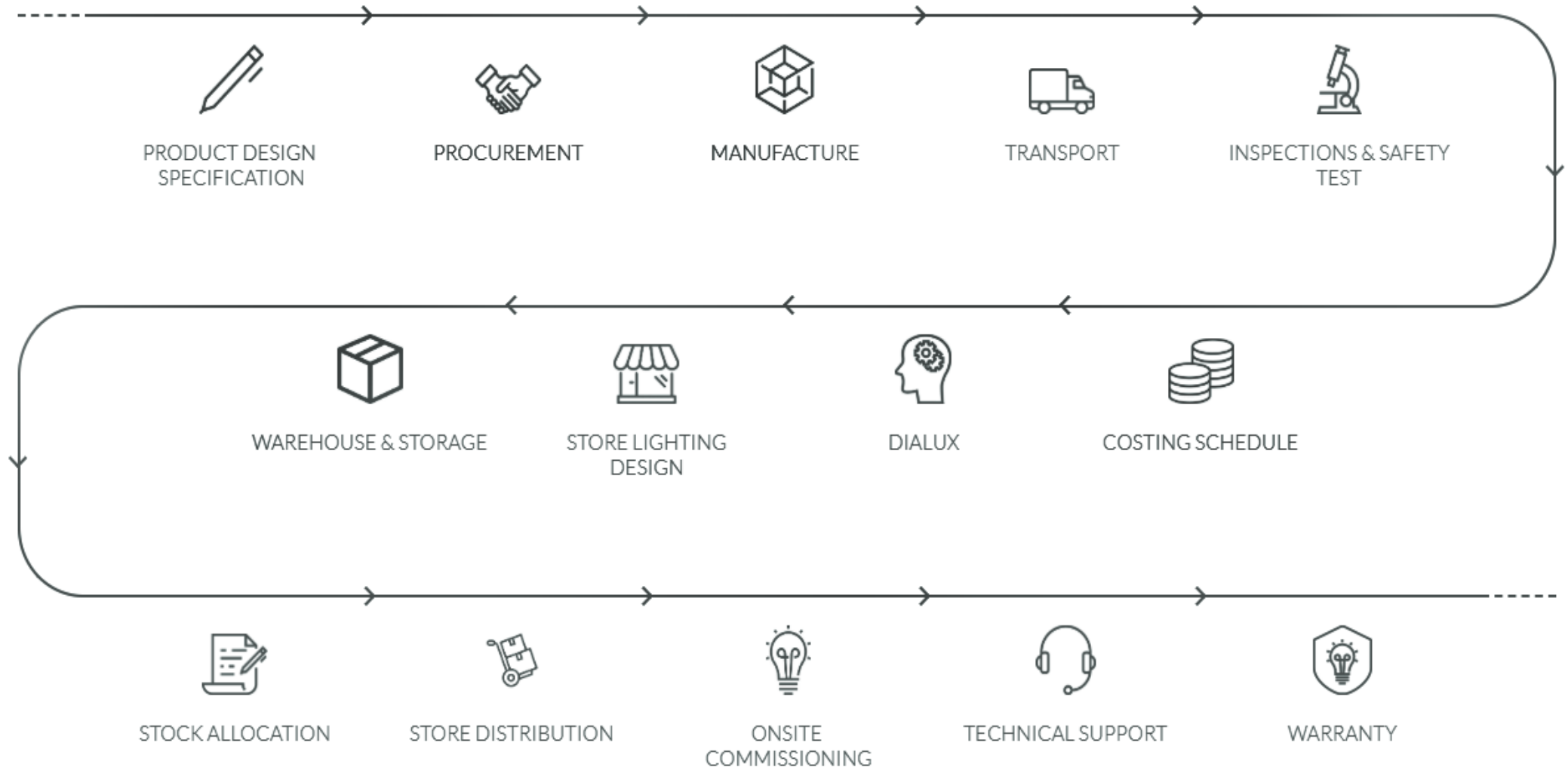
Our in-house design team work with local manufacturers and our worldwide partners, enabling us to design, manufacture samples and products on short lead times. Additionally, our in-house manufacturing team can recycle, upcycle, repurpose, create new products and modify pre-existing products – we can do it all!



# Our Process

From conceptual design and beyond, we cover every element of retail, commercial, industrial and residential lighting under one roof. We offer a huge range of lighting fixtures to retail stores, be it huge chains or independent stores: on top of that, we offer consultation, conceptual design and 3D rendering of the space prior to installation.

As not one size fits all, every single client is treated with a bespoke service tailored to their unique requirements. Not only that, you can rest easy knowing that should you have any queries, you will have a dedicated person as a point of contact throughout your Prolight journey. We are service led, and always go above and beyond to ensure your deadlines are met.





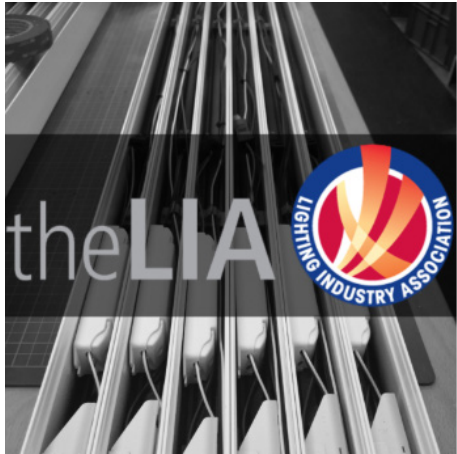




# No job too big, or too small

We have worked on projects all over the world, no job is too big or too small.

As members of the LIA we can ensure all fittings supplied meet the requirements for the country they are going to.



Located at the forefront of the industry the Lighting Industry Association is dedicated to promoting best practice throughout the sector, as such, we can ensure that all fittings are up to the latest industry standards. No one knows the Lighting Industry quite like they do and you can rest easy knowing that all products supplied by us not only fit your design requirements, but also performance and quality.



PARIS  
CHELSEA  
BATH  
HAMBURG

**LUSH**  
FRESH HANDMADE COSMETICS

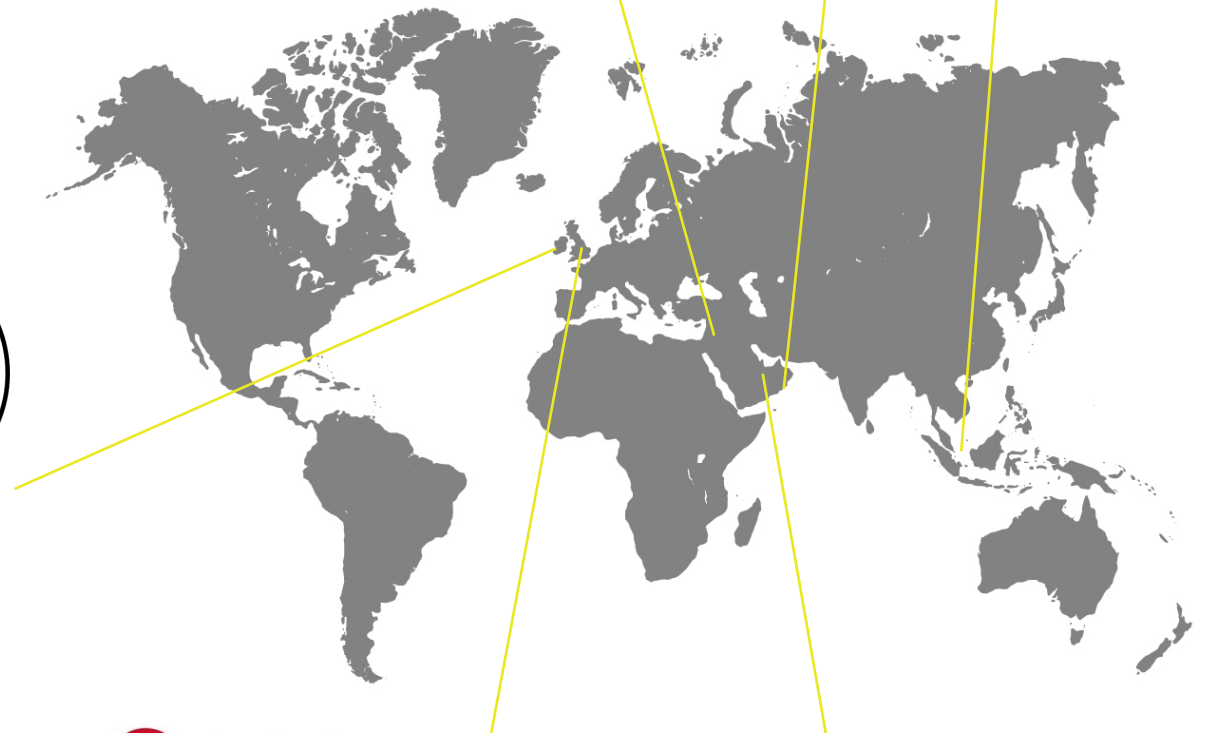
BEIRUT  
HONG KONG  
SWITZERLAND  
BARI  
PRAGUE

**RIVER  
ISLAND**

DOHA  
QATAR  
MALTA  
OXFORD



KUALA LUMPUR  
SINGAPORE



**lululemon**  
LONDON  
QATAR  
PARIS  
FRANKFURT  
AMSTERDAM

**MISSGUIDED**  
ABU DHABI  
DUBAI  
LONDON








# Let's Work Together



We're a friendly bunch. Get in touch to discuss your next project, we'd love to hear about it!

 [PROLIGHTDESIGN.COM](https://www.prolightdesign.com)  
 [HELLO@PROLIGHTDESIGN.COM](mailto:HELLO@PROLIGHTDESIGN.COM)  
 (+44) 01380 739911

      
FOLLOW US  
[@PROLIGHT\\_DESIGN](https://www.instagram.com/prolight_design)

Copyright © 2019 Prolight Design Ltd.  
All rights reserved. PLF40\_2.CR52.  
Uncontrolled when printed.