

TRON+

Introducing the Tron+ Linear LED System, a lighting solution that redefines the Tron system. This system boasts a bigger profile, designed to provide an enhanced presence and a premium finish. Tron+ offers a diverse array of LED options, allowing for customisation with LED spotlights and Darklight. This combination achieves a seamless ambiance with focused illumination, providing the flexibility to fine-tune your lighting to meet your precise requirements.

Designed, manufactured and assembled with precision in Britain. It's not just an upgrade; it's a tailor-made lighting solution that embodies quality and innovation, offering a glimpse into the future of linear lighting with Tron+.

STANDARD SPECIFICATION

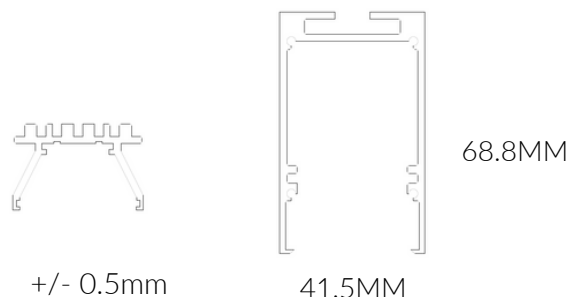
Lumen Output	Up to 3000 lm/m
Colour Rendering Index	CRI 90+
Colour Temperature	3000K/3500K/4000K
Luminaire Beam Angle	100°
Protection	IP20
Colour	Black/White/Silver
Dimmable	On/Off
Wattage	15.5w/m
Input	220-240V
Weight	Dependent on length

STANDARD WARRANTY TERMS

FOC direct replacement luminaire	5 years
Extended warranty options	On request

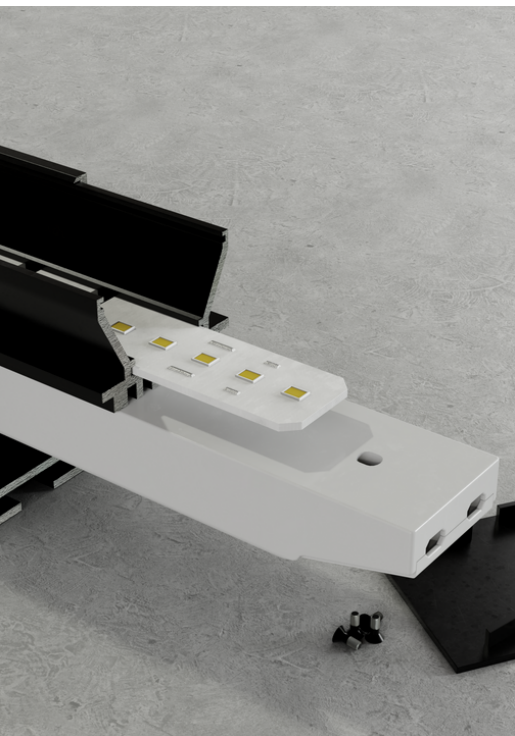
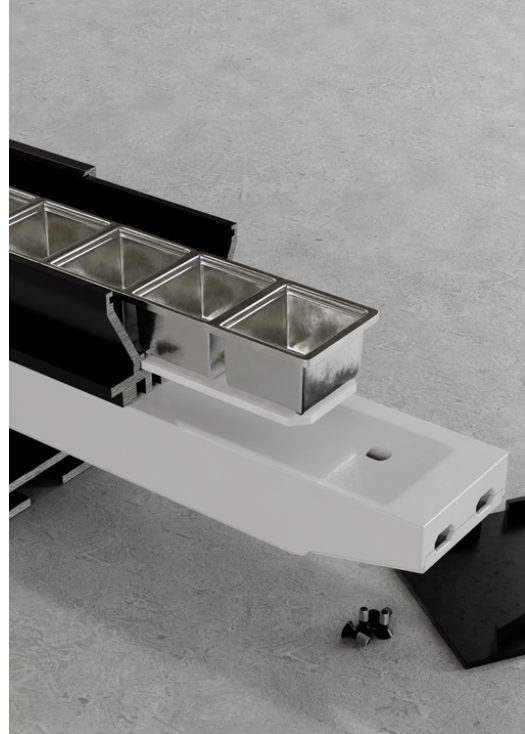


DIMENSIONS

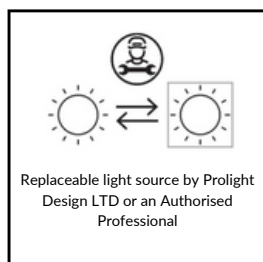


This product has a warranty period of 5 Years from the date of purchase. The warranty is invalid in the case of improper use, installation, tampering, and removal of the Q.C. date label; installation in an improper working environment or installation not according to the current edition of the National Electric Code. Should this product fail during the warranty period it will be replaced free of charge, subject to the correct installation of the original product and subsequent return of the faulty unit. Prolight reserves the right to alter specifications without prior notice.

Copyright © 2023 Prolight Design Ltd. All rights reserved. Uncontrolled when printed.



DESIGN MANUFACTURE CONSULTANCY SUPPLY



Contact

www.prolightdesign.com
hello@prolightdesign.com
(+44) 01380 739911



@Prolight_Design

